

Source: National Visitor Survey, Tourism Research Australia.

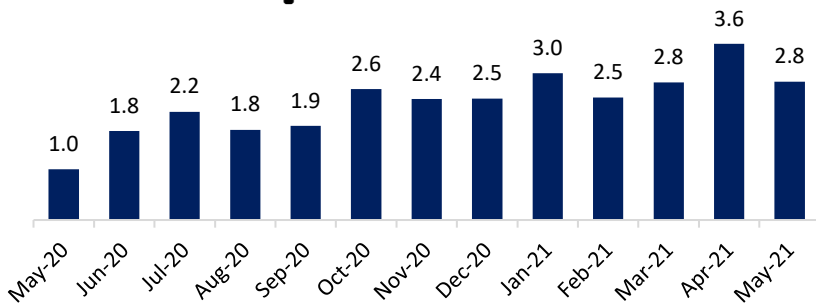
Due to the enforcement of travel bans and border closures from late March 2020, NSW recorded its lowest ever domestic overnight visitation in April 2020. As cases declined and restrictions eased, visitation to NSW increased mostly during school and summer holiday months. Following the school holidays and Easter long weekend in April, the NSW domestic overnight visitors, visitor nights and expenditure levels decreased in May 2021. This was primarily driven by the decline in visitation to Regional NSW. In May 2021, Sydney received its highest volume of domestic overnight visitors since the beginning of 2020. The visitation from interstate market to NSW declined due to the lockdown in Melbourne, while visitation from intrastate market also marked a decline.

In the year ended (YE) May 2021, NSW received 29.8 million domestic overnight visitors who stayed 102.3 million nights and spent \$18.5 billion. This was a decline of 1.9 million domestic overnight visitors (or down 6 per cent), and \$0.6 billion in expenditure (or down 3 per cent) as compared to YE May 2020, while nights increased by 0.2 million nights (or up 0.2 per cent).

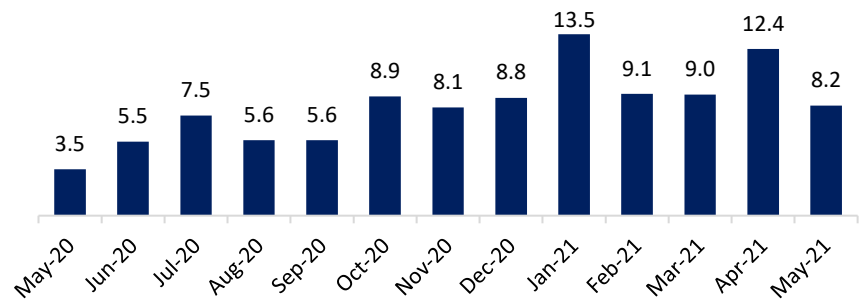
Domestic Overnight Trends in NSW



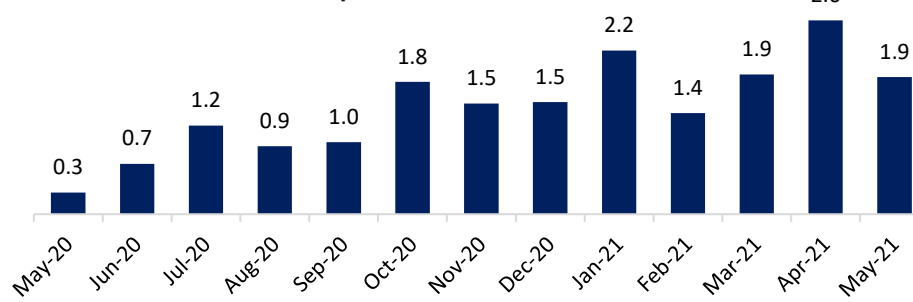
Visitors (Million)



Nights (Million)



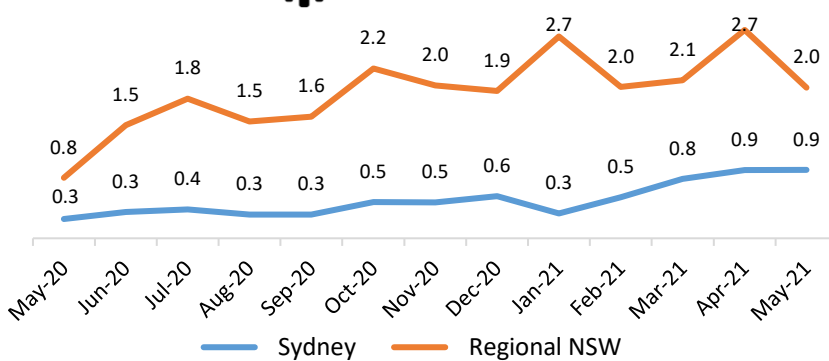
\$ Expenditure (Billion)



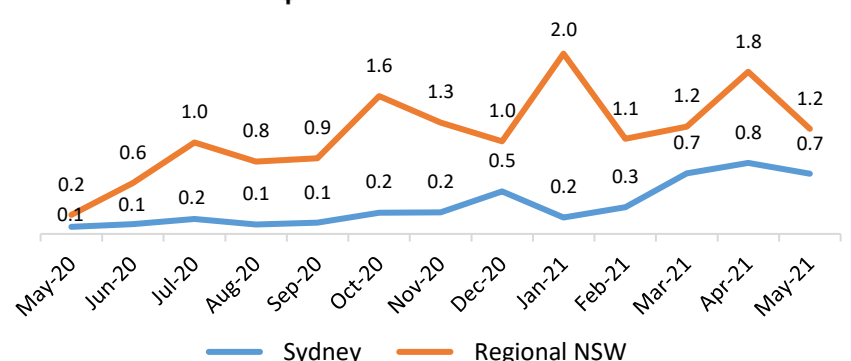
Domestic Overnight Trends in Sydney and Regional NSW



Visitors (Million)



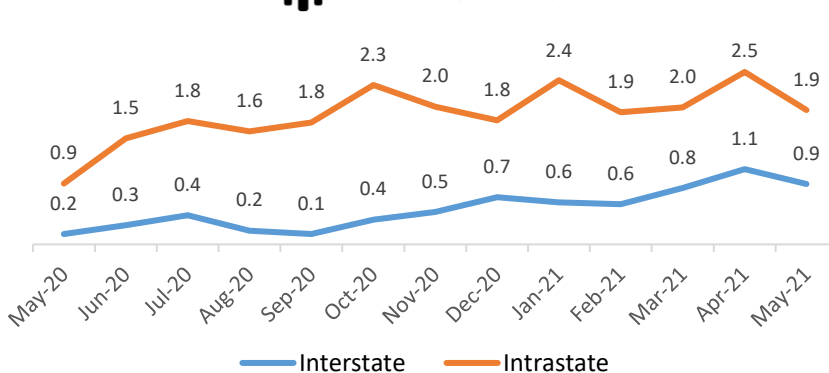
\$ Expenditure (Billion)



Domestic Overnight Trends in NSW by Origin Market



Visitors (Million)



\$ Expenditure (Billion)

