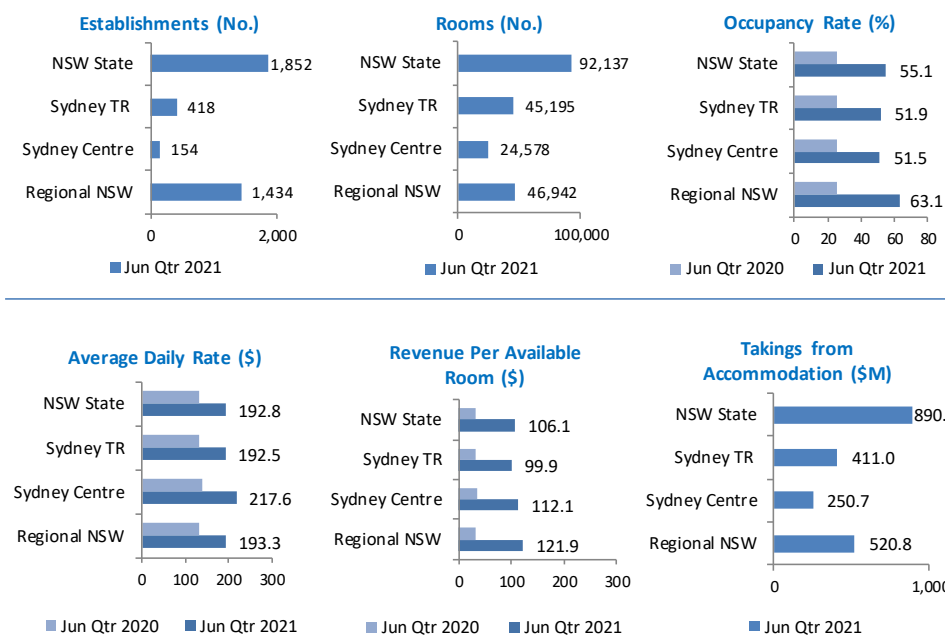


Accommodation supply in NSW in June Qtr 2021 was slightly higher than March Qtr 2021 – there were 16 more establishments and 850 rooms. This growth stems from properties re-opening from temporary closure as well as one hotel opening.

June Qtr 2020 was a period of difficulty for the accommodation sector with COVID-19 restrictions on travel and civilian movement. Taking this into account, it is therefore unsurprising that NSW, Sydney and Regional NSW’s accommodation performance in June Qtr 2021 was at least 26 per cent above occupancy rate of June Qtr 2020.

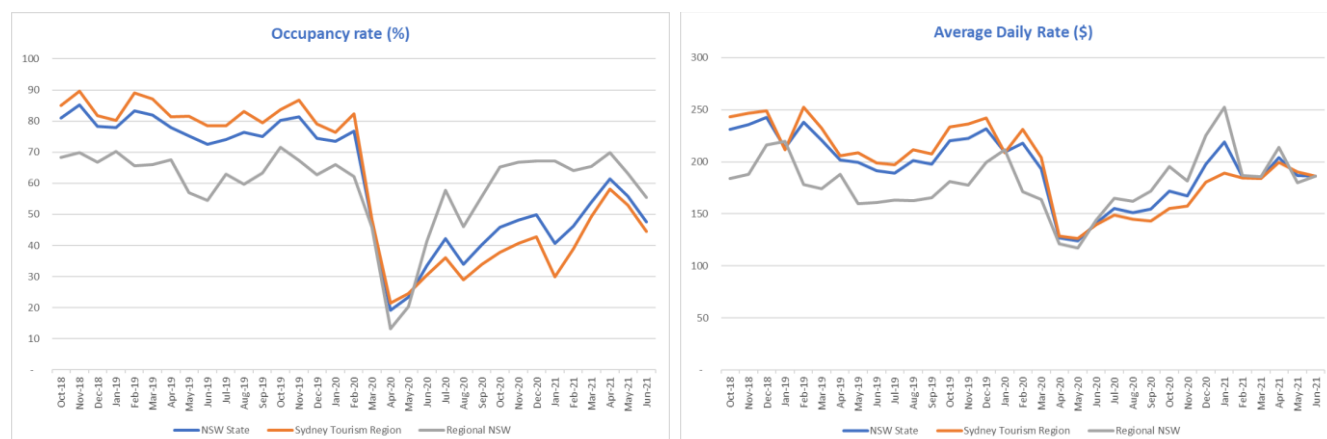
Regional NSW holds the lion’s share of State properties (77 per cent) and a slightly larger majority of rooms (51 per cent).

Establishments with 10 rooms or more¹



Time series charts to June 2021 mirror the impact of the COVID-19 pandemic with a massive drop in NSW accommodation performance in April 2020 and a turbulent recovery since. The increased participation in intrastate travel, after easing of restrictions, has resulted in Regional NSW leading the recovery.

Occupancy rates in Regional NSW exceeded Sydney’s from June 2020 and continue to do so. As of June 2021, Sydney’s occupancy rate sits 26 points above the rate of June 2020. For most of the past year, the Average Daily Rate in Regional NSW exceeded Sydney’s; however, for the month of May 2021, Sydney retook the lead.

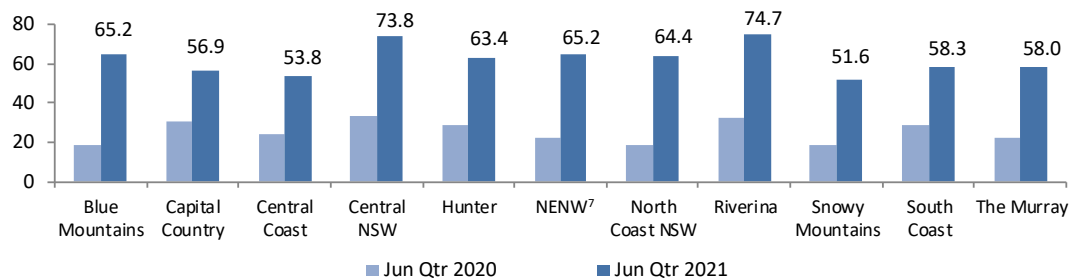


Notes:

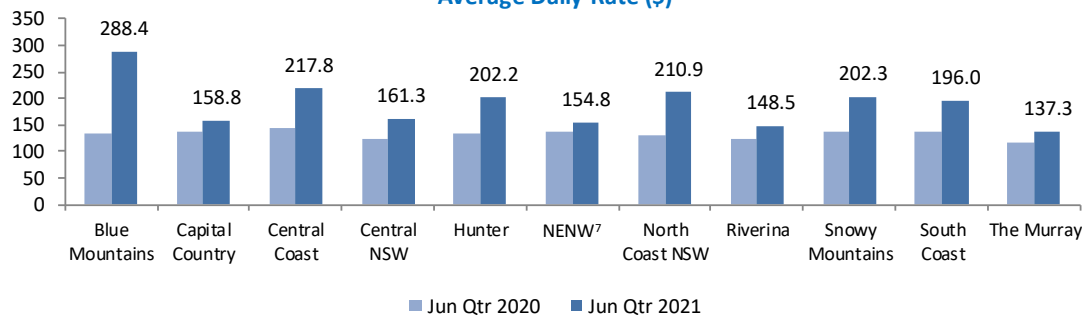
- Accommodation properties included in the report are: Hotels and Serviced Apartments.
- STR database is member-based and the data is supplied on a voluntary basis. Accommodation performance results are based on room participation rate in NSW State, Sydney Tourism Region (Sydney TR), Sydney Centre and Regional NSW.
- Sydney Centre includes Sydney CBD, Barangaroo, The Rocks, Haymarket, Ultimo, Chippendale, Pyrmont, Surry Hills, Woolloomooloo/Potts Point and Waterloo and is part of Sydney TR.
- Average daily rate (ADR) is the average takings per room per night for occupied rooms while RevPar or Revenue per available room is the average takings per room per night for all rooms, whether the room are occupied or not.
- ‘Takings from accommodation’ are estimated from information on number of rooms, occupancy rate and average daily rate. Takings for NSW State, Sydney TR, Sydney Centre and Regional NSW are separately calculated.
- Data is not available for Outback TR.
- NENW is New England North West.

Regional NSW

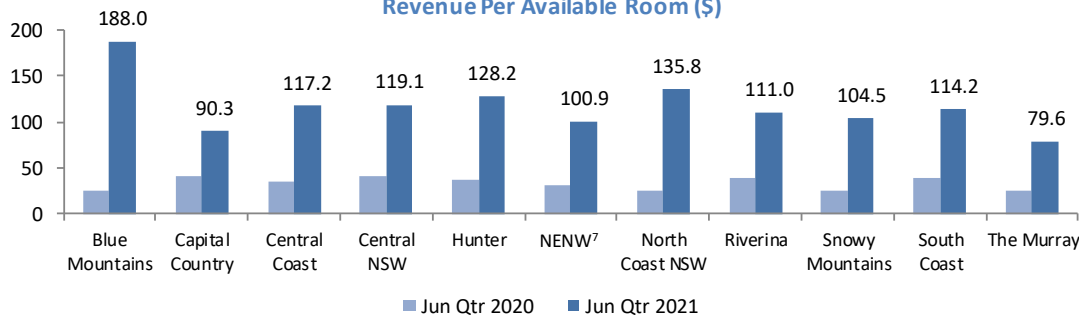
Occupancy Rate (%)



Average Daily Rate (\$)



Revenue Per Available Room (\$)



North Coast NSW tourism region, like in the March quarter 2021, leads Regional NSW and accounts for 23.5 per cent of establishments and 22.4 per cent of rooms. It also leads in terms of room revenue takings in Regional NSW with 25.0 per cent.

June Qtr 2021 continued to reap the benefits of increased intrastate travel, particularly Easter long weekend and Queen’s Birthday long weekend. This spike resulted in increases across all accommodation metrics compared to June quarter 2020 including Average Daily Rate, Occupancy rate and Revenue Per Available Room.

Notes:

1. Accommodation properties included in the report are: Hotels and Serviced Apartments.
2. STR database is member-based and the data is supplied on a voluntary basis. Accommodation performance results are based on room participation rate in NSW State, Sydney Tourism Region (Sydney TR), Sydney Centre and Regional NSW.
3. Sydney Centre includes Sydney CBD, Barangaroo, The Rocks, Haymarket, Ultimo, Chippendale, Pyrmont, Surry Hills, Woolloomooloo/Potts Point and Waterloo and is part of Sydney TR.
4. Average daily rate (ADR) is the average takings per room per night for occupied rooms while RevPar or Revenue per available room is the average takings per room per night for all rooms, whether the room are occupied or not.
5. ‘Takings from accommodation’ are estimated from information on number of rooms, occupancy rate and average daily rate. Takings for NSW State, Sydney TR, Sydney Centre and Regional NSW are separately calculated.
6. Data is not available for Outback TR.
7. NENW is New England North West.