

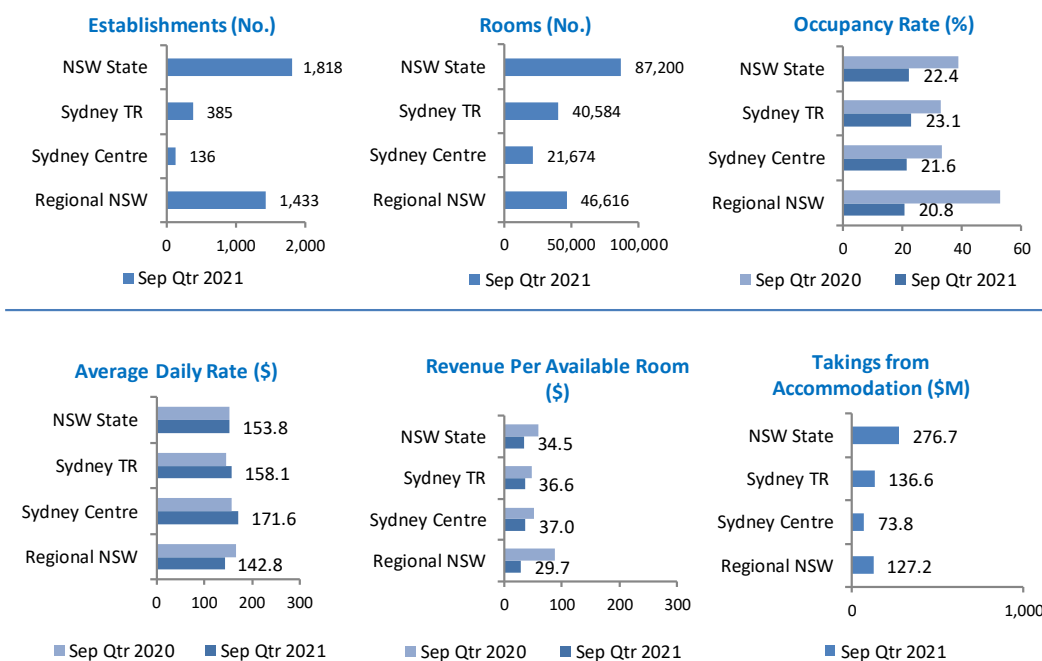
Source: STR

Accommodation supply in NSW in September quarter 2021 was lower than June quarter 2021 – there were 34 fewer establishments and 4,900 rooms. This decline stems from the State-wide lockdown enforced in Sydney and surrounding Regional NSW areas.

September quarter 2021 was a period of difficulty for the accommodation sector with COVID-19 restrictions on travel and civilian movement. Taking this into account, it is therefore unsurprising that NSW, Sydney and Regional NSW’s occupancy rate in September quarter 2021 was below September quarter 2020 (down 17 percentage points, 9 percentage points and 36 percentage points, respectively).

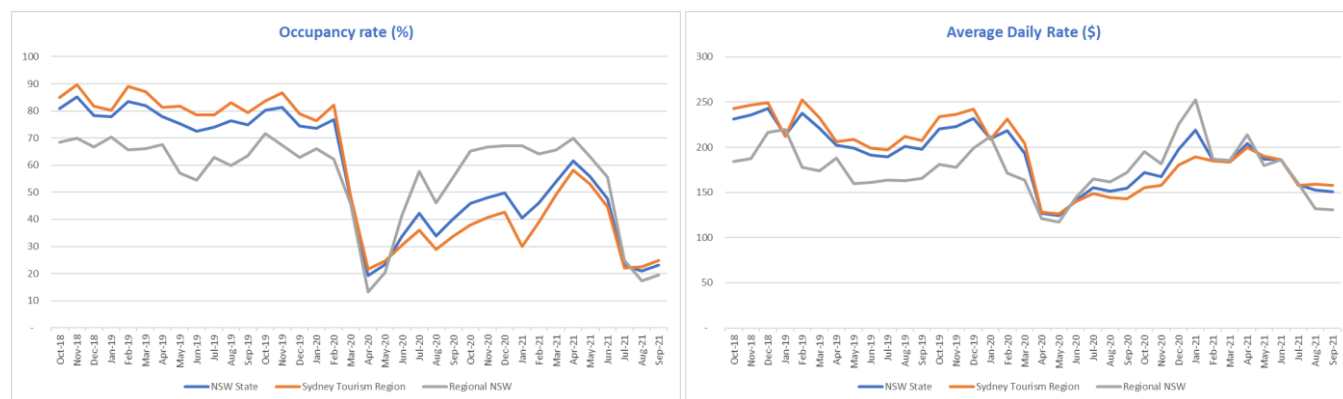
Regional NSW holds the lion’s share of State properties (79 per cent) and a slightly larger majority of rooms (53 per cent).

Establishments with 10 rooms or more¹



Time series charts to September 2021 mirror the impact of the COVID-19 pandemic with a massive drop in NSW accommodation performance in April 2020 and a turbulent recovery since. The increased participation in intrastate travel, after easing of restrictions, has resulted in Regional NSW leading the recovery. The lockdown and state border restrictions imposed in June 2021 in response to the Sydney COVID-19 outbreak saw decline in accommodation performance for NSW since July 2021.

Occupancy rates in Regional NSW exceeded Sydney’s from June 2020 and continue to do so until July 2021. However, this lead ended in August 2021 with Sydney regaining its position of higher occupancy rates. For most of the past year, the Average Daily Rate in Regional NSW exceeded Sydney’s; however, since the month of August 2021, Sydney retook the lead.



Notes:

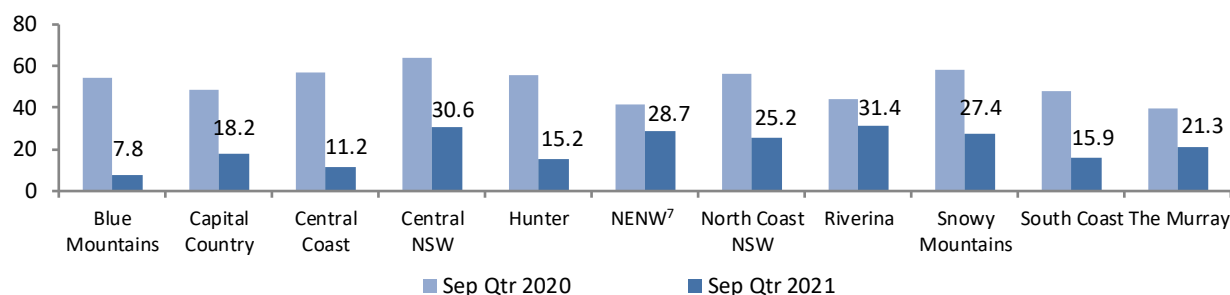
- Accommodation properties included in the report are: Hotels and Serviced Apartments.
- STR database is member-based and the data is supplied on a voluntary basis. Accommodation performance results are based on room participation rate in NSW State, Sydney Tourism Region (Sydney TR), Sydney Centre and Regional NSW.
- Sydney Centre includes Sydney CBD, Barangaroo, The Rocks, Haymarket, Ultimo, Chippendale, Pyrmont, Surry Hills, Woolloomooloo/Potts Point and Waterloo and is part of Sydney TR.
- Average daily rate (ADR) is the average takings per room per night for occupied rooms while RevPar or Revenue per available room is the average takings per room per night for all rooms, whether the room are occupied or not.
- ‘Takings from accommodation’ are estimated from information on number of rooms, occupancy rate and average daily rate. Takings for NSW State, Sydney TR, Sydney Centre and Regional NSW are separately calculated.
- Data is not available for Outback TR.
- NENW is New England North West.

Regional NSW

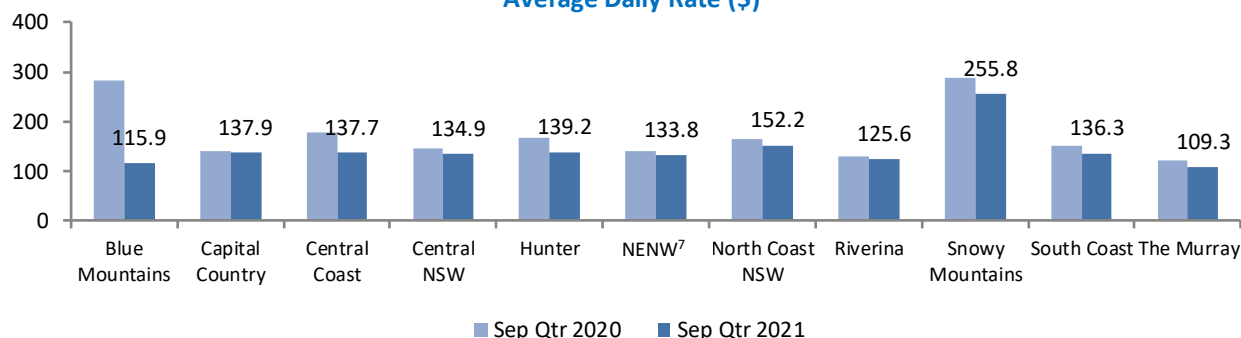
North Coast NSW tourism region, like in the June quarter 2021, leads Regional NSW and accounts for 23.7 per cent of establishments and 22.6 per cent of rooms. It also leads in terms of room revenue takings in Regional NSW with 29.3 per cent.

State-wide lockdown enforced in Sydney and surrounding Regional NSW areas resulted in decreases in Revenue takings, Average Daily Rate, Occupancy rate and Revenue Per Available Room across all tourism regions in September quarter 2021 as compared to September quarter 2020.

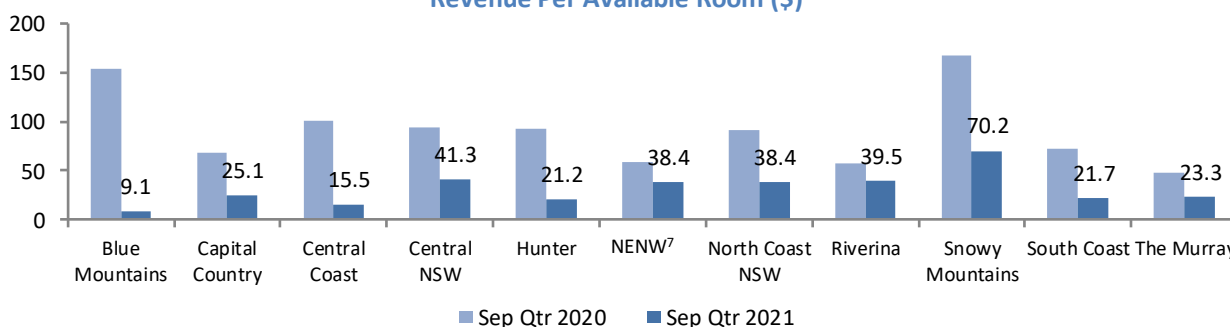
Occupancy Rate (%)



Average Daily Rate (\$)



Revenue Per Available Room (\$)



Notes:

1. Accommodation properties included in the report are: Hotels and Serviced Apartments.
2. STR database is member-based and the data is supplied on a voluntary basis. Accommodation performance results are based on room participation rate in NSW State, Sydney Tourism Region (Sydney TR), Sydney Centre and Regional NSW.
3. Sydney Centre includes Sydney CBD, Barangaroo, The Rocks, Haymarket, Ultimo, Chippendale, Pyrmont, Surry Hills, Woolloomooloo/Potts Point and Waterloo and is part of Sydney TR.
4. Average daily rate (ADR) is the average takings per room per night for occupied rooms while RevPar or Revenue per available room is the average takings per room per night for all rooms, whether the room are occupied or not.
5. 'Takings from accommodation' are estimated from information on number of rooms, occupancy rate and average daily rate. Takings for NSW State, Sydney TR, Sydney Centre and Regional NSW are separately calculated.
6. Data is not available for Outback TR.
7. NENW is New England North West.