

Domestic overnight travel

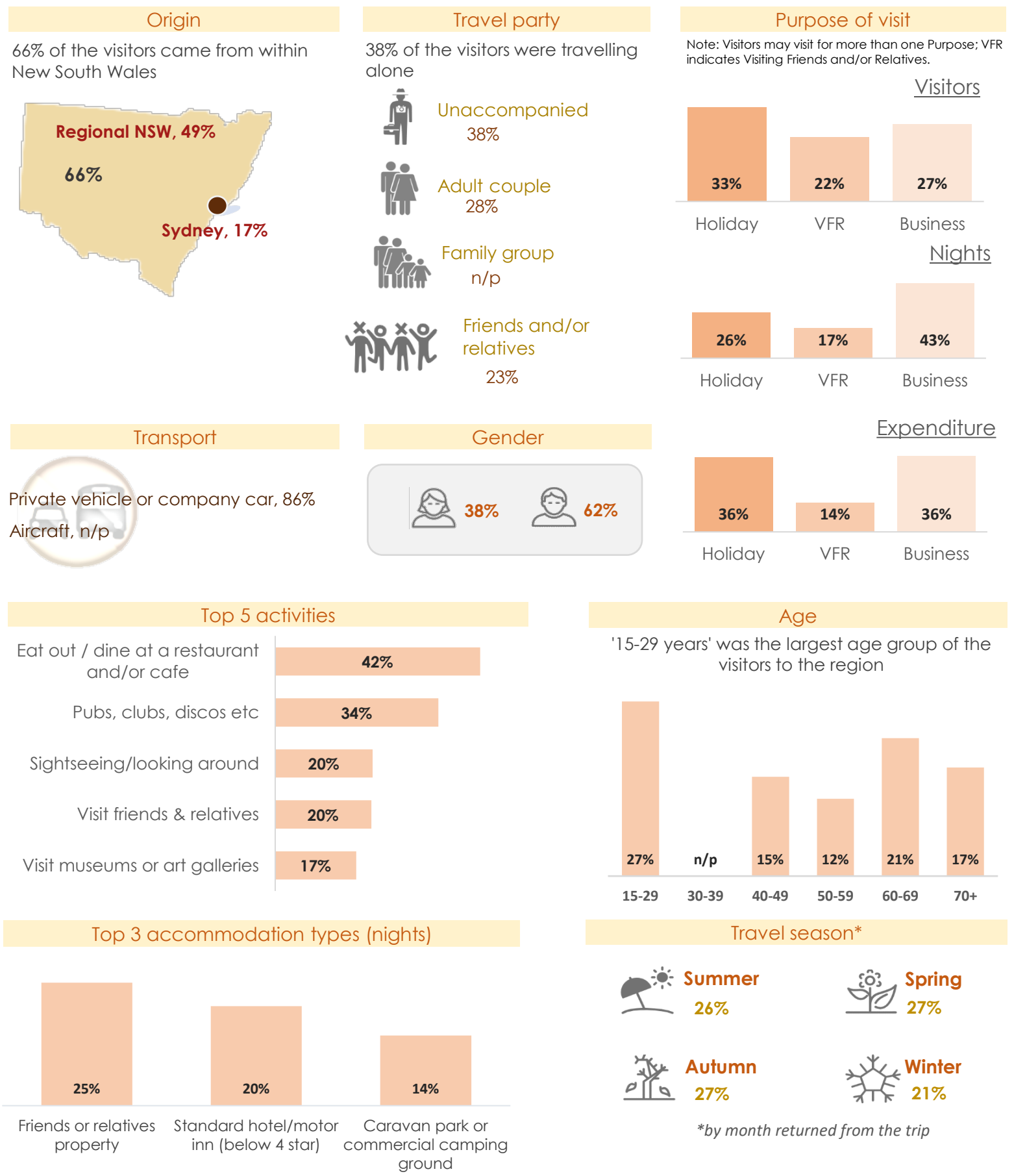
Note: International and Domestic Daytrip data for YE September 2021 are not available for this tourism region.

Visitors: 537,300 (+33.3% YoY)
 Nights: 2.2m (+7.4% YoY)
 Expenditure: \$251.5m (+0.7% YoY)

Average spend
 \$115 per night
 \$468 per visitor

Average length of stay:
 4.1 nights

#12 for visitors
 #12 for nights
 #12 for expenditure
In Regional NSW



DOMESTIC DAYTRIP AND INTERNATIONAL DATA ARE NOT RELIABLE AND THEREFORE NOT PUBLISHABLE