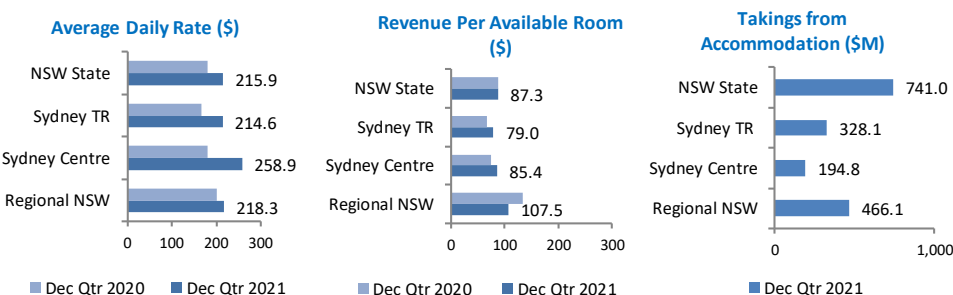
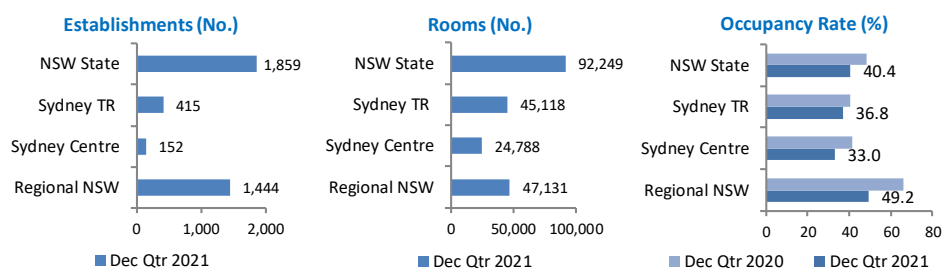


Source: STR

Accommodation supply in NSW in December quarter 2021 was higher than September quarter 2021 – there were 41 more establishments and 5,049 rooms. With the double vaccination rate of the NSW eligible population reaching 80 per cent by mid-October, there was a progressive easing of some of the lockdown restrictions in NSW throughout October 2021. However, travel by Sydney residents to regional NSW was delayed until 1st November due to the lower vaccination rates in regional NSW’s population. Taking this into account, it is therefore unsurprising that NSW, Sydney and Regional NSW’s occupancy rate in December quarter 2021 was below December quarter 2020 (down 8 percentage points, 4 percentage points and 17 percentage points, respectively).

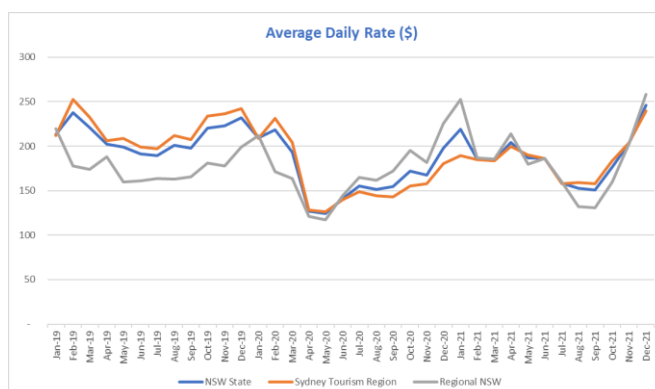
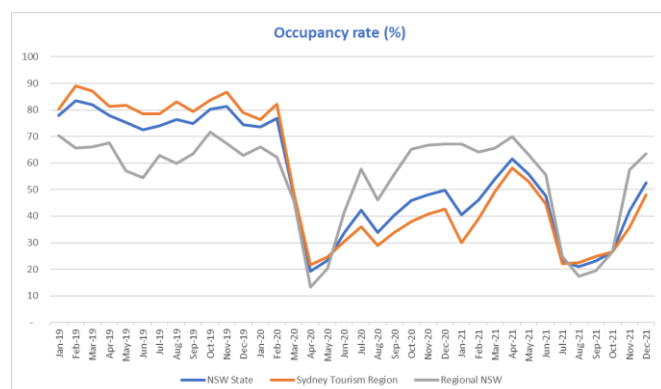
Regional NSW holds the lion’s share of State properties (78 per cent) and a slightly larger majority of rooms (51 per cent).

Establishments with 10 rooms or more¹



Time series charts to December 2021 mirror the impact of the COVID-19 pandemic with a massive drop in NSW accommodation performance in April 2020 and a turbulent recovery since. The increased participation in intrastate travel, after easing of restrictions, has resulted in Regional NSW leading the recovery. The lockdown and state border restrictions imposed in June 2021 in response to the Sydney COVID-19 outbreak saw decline in accommodation performance for NSW since July 2021. However, with lockdown ending in NSW in October there was a significant improvement in results since November.

Occupancy rates in Regional NSW exceeded Sydney’s from June 2020 and continued to do so until July 2021. Sydney recorded a higher occupancy rate than regional NSW in the months of August and September 2021, however, Regional NSW retook the lead from the month of November 2021.



Notes:

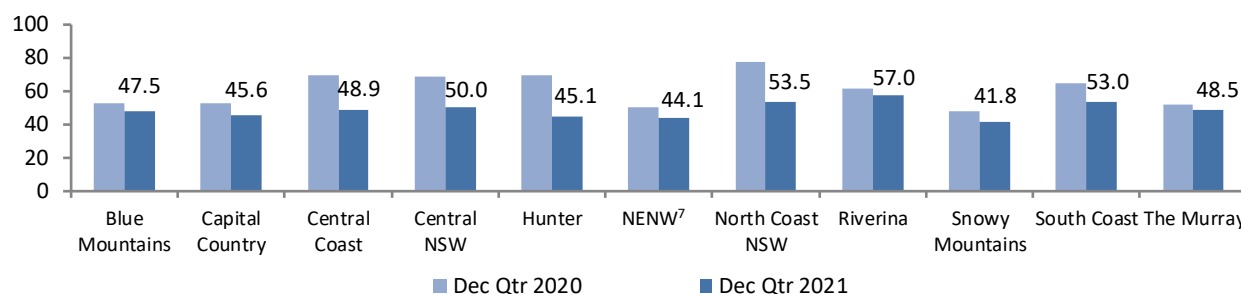
- Accommodation properties included in the report are: Hotels and Serviced Apartments.
- STR database is member-based and the data is supplied on a voluntary basis. Accommodation performance results are based on room participation rate in NSW State, Sydney Tourism Region (Sydney TR), Sydney Centre and Regional NSW.
- Sydney Centre includes Sydney CBD, Barangaroo, The Rocks, Haymarket, Ultimo, Chippendale, Pyrmont, Surry Hills, Woolloomooloo/Potts Point and Waterloo and is part of Sydney TR.
- Average daily rate (ADR) is the average takings per room per night for occupied rooms while RevPar or Revenue per available room is the average takings per room per night for all rooms, whether the room are occupied or not.
- ‘Takings from accommodation’ are estimated from information on number of rooms, occupancy rate and average daily rate. Takings for NSW State, Sydney TR, Sydney Centre and Regional NSW are separately calculated.
- Data is not available for Outback TR.
- NENW is New England North West.

Regional NSW

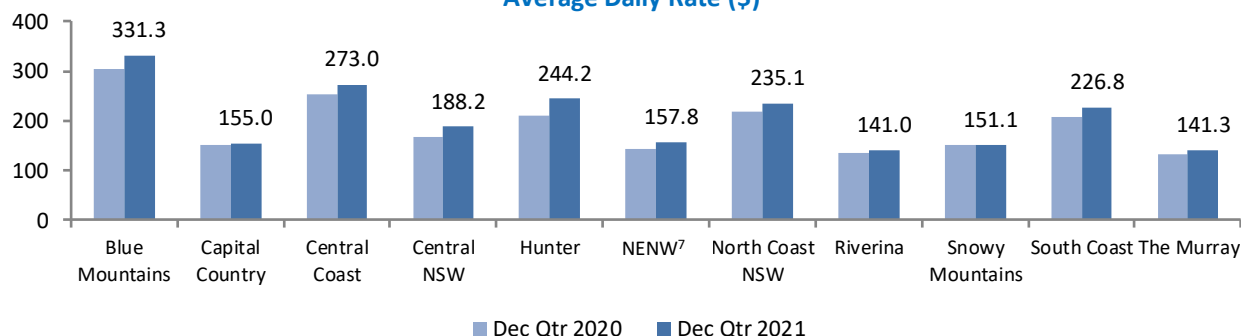
North Coast NSW tourism region, like in the September quarter 2021, leads Regional NSW and accounts for 23.5 per cent of establishments and 22.5 per cent of rooms. It also leads in terms of room revenue takings in Regional NSW with 26.3 per cent share.

State-wide restrictions enforced in Sydney and surrounding Regional NSW areas resulted in decreases in Revenue takings, Occupancy rate and Revenue Per Available Room across all tourism regions in December quarter 2021 as compared to December quarter 2020. However, Average Daily Rate increased for all regions except Snowy Mountains in December quarter 2021. When compared to September quarter 2021, all regions recorded a significant increase in occupancy rates.

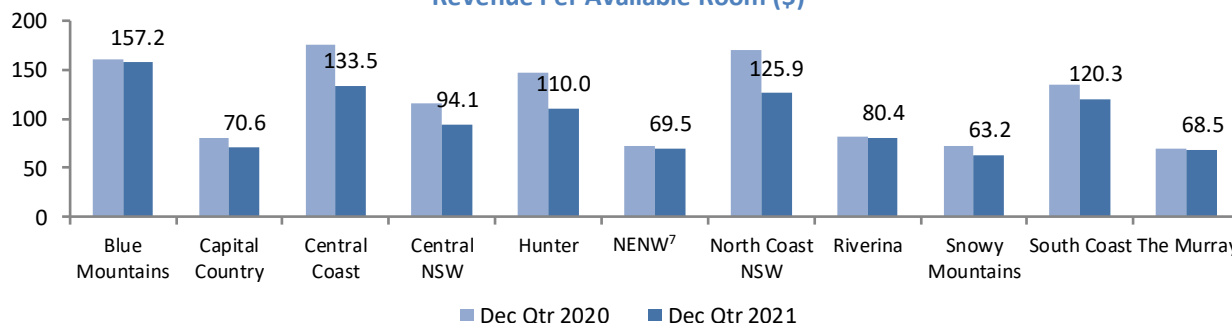
Occupancy Rate (%)



Average Daily Rate (\$)



Revenue Per Available Room (\$)



Notes:

- Accommodation properties included in the report are: Hotels and Serviced Apartments.
- STR database is member-based and the data is supplied on a voluntary basis. Accommodation performance results are based on room participation rate in NSW State, Sydney Tourism Region (Sydney TR), Sydney Centre and Regional NSW.
- Sydney Centre includes Sydney CBD, Barangaroo, The Rocks, Haymarket, Ultimo, Chippendale, Pyrmont, Surry Hills, Woolloomooloo/Potts Point and Waterloo and is part of Sydney TR.
- Average daily rate (ADR) is the average takings per room per night for occupied rooms while RevPar or Revenue per available room is the average takings per room per night for all rooms, whether the room are occupied or not.
- 'Takings from accommodation' are estimated from information on number of rooms, occupancy rate and average daily rate. Takings for NSW State, Sydney TR, Sydney Centre and Regional NSW are separately calculated.
- Data is not available for Outback TR.
- NENW is New England North West.