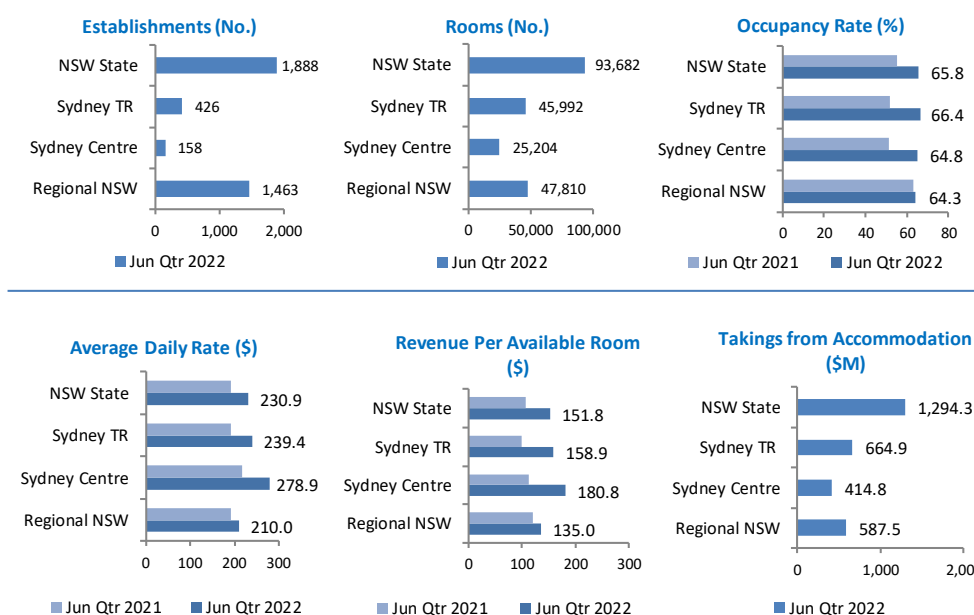


In June quarter 2022, occupancy rate in New South Wales, Sydney and Regional NSW was above the same quarter in 2021 (up 11 percentage points, 15 percentage points and 1 percentage points, respectively). This is not surprising given June quarter 2021 was a difficult period for the accommodation sector with lockdowns and restrictions that started in Sydney from mid-June, and the circuit breaker lockdown in Victoria (from late May to mid-June).

Accommodation supply in NSW in June quarter 2022 was higher than March quarter 2022 – there were 22 more establishments and 727 rooms.

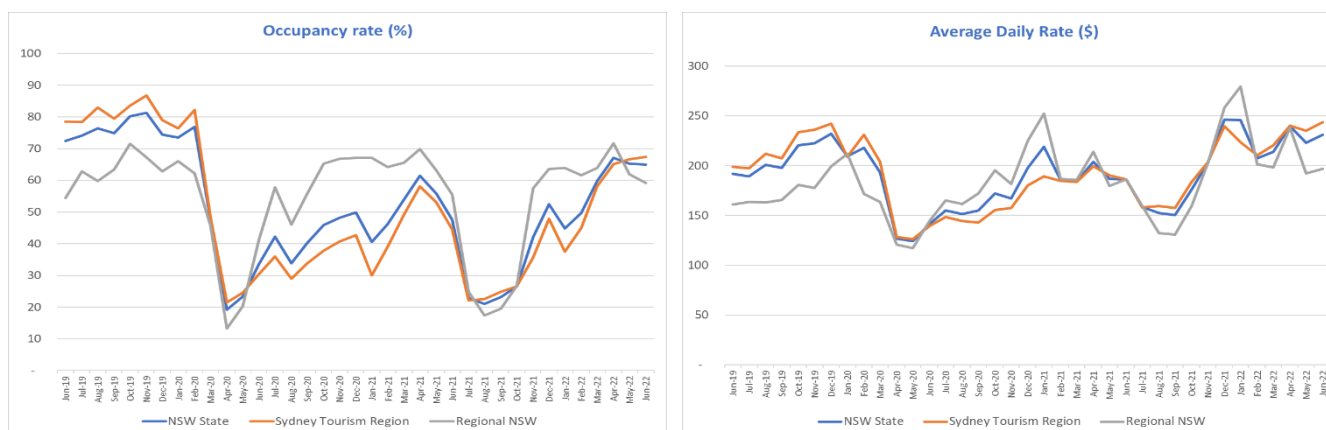
Regional NSW holds the lion’s share of State properties (77 per cent) and a slightly larger majority of rooms (51 per cent).

Establishments with 10 rooms or more¹



Time series charts to June 2022 mirror the impact of the COVID-19 pandemic with a massive drop in NSW accommodation performance in April 2020 and a turbulent recovery since. The lockdown and state border restrictions imposed in mid-June 2021 in response to the Sydney COVID-19 outbreak saw a sharp decline in accommodation performance for NSW. However, with lockdown ending in NSW in October there was a significant recovery since November. Accommodation performance was hit again by a surge in Omicron cases in January 2022, however with the reopening of state and international borders there were signs of recovery in the following months.

Occupancy rates in Regional NSW exceeded Sydney’s from October 2021; however, Sydney retook the lead in the month of May 2022.



Notes:

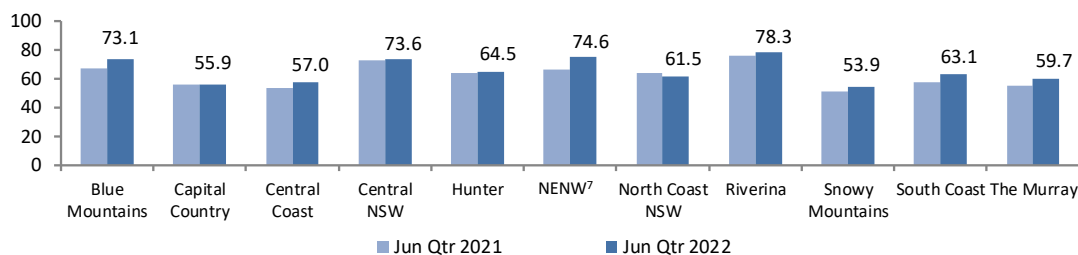
1. Accommodation properties included in the report are: Hotels and Serviced Apartments.
2. STR database is member-based and the data is supplied on a voluntary basis. Accommodation performance results are based on room participation rate in NSW State, Sydney Tourism Region (Sydney TR), Sydney Centre and Regional NSW.
3. Sydney Centre includes Sydney CBD, Barangaroo, The Rocks, Haymarket, Ultimo, Chippendale, Pyrmont, Surry Hills, Woolloomooloo/Potts Point and Waterloo and is part of Sydney TR.
4. Average daily rate (ADR) is the average takings per room per night for occupied rooms while RevPar or Revenue per available room is the average takings per room per night for all rooms, whether the room are occupied or not.
5. 'Takings from accommodation' are estimated from information on number of rooms, occupancy rate and average daily rate. Takings for NSW State, Sydney TR, Sydney Centre and Regional NSW are separately calculated.
6. Data is not available for Outback TR.
7. NENW is New England North West.

Regional NSW

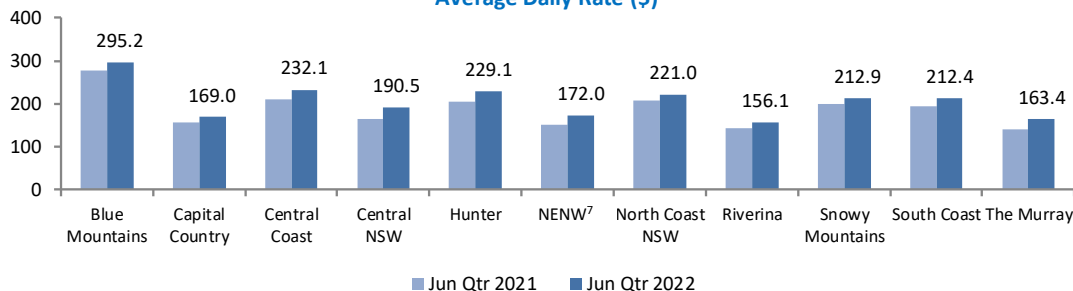
North Coast NSW continues to lead Regional NSW and accounts for 23.3 per cent of establishments and 22.5 per cent of rooms. It also leads in terms of room revenue takings in Regional NSW with 22.7 per cent share.

Regional NSW areas (except North Coast) recorded increases in occupancy rate in June quarter 2022 as compared to June quarter 2021. Average Daily Rate and Revenue per available room increased across all tourism regions in June quarter 2022. When compared to March quarter 2022, Blue Mountains, Capital Country, Central NSW, the Hunter, New England North West and Riverina recorded an increase in occupancy rates.

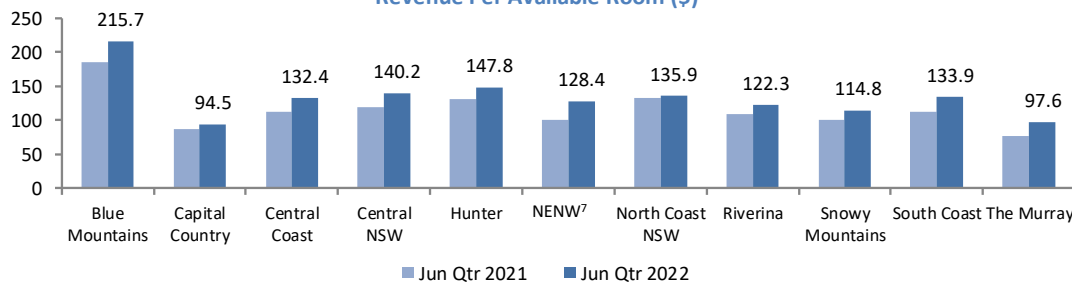
Occupancy Rate (%)



Average Daily Rate (\$)



Revenue Per Available Room (\$)



Notes:

1. Accommodation properties included in the report are: Hotels and Serviced Apartments.
2. STR database is member-based and the data is supplied on a voluntary basis. Accommodation performance results are based on room participation rate in NSW State, Sydney Tourism Region (Sydney TR), Sydney Centre and Regional NSW.
3. Sydney Centre includes Sydney CBD, Barangaroo, The Rocks, Haymarket, Ultimo, Chippendale, Pyrmont, Surry Hills, Woolloomooloo/Potts Point and Waterloo and is part of Sydney TR.
4. Average daily rate (ADR) is the average takings per room per night for occupied rooms while RevPar or Revenue per available room is the average takings per room per night for all rooms, whether the room are occupied or not.
5. 'Takings from accommodation' are estimated from information on number of rooms, occupancy rate and average daily rate. Takings for NSW State, Sydney TR, Sydney Centre and Regional NSW are separately calculated.
6. Data is not available for Outback TR.
7. NENW is New England North West.